

KISHUU KATSUURA MAGURO DINING MAP

Japan's Best Raw Tuna



A

B

C

1

2

3

4

Kishuu Katsuura Nama Maguro Dining Map

Katsuura Map



KAIHAMI

NACHI NEBOKE DOU

CAFE CODOU

KAMASEN

GOSAKU

HANANO

Hageyama

TAIRYOU

MATENROU
CHINESE FOOD

Town Hall Please see
katsuura Town Map

MAGURO
TAIKEN
CAN

Urashima Hotel

Seigantoji Temple
Kumano Nachi
Grand Shrine

Daimonzaka
Tea House

Daimonzaka
Tea House

Daimonzaka
Parking

Fudaraku Temple

North Gate

JR Nachi Sta.

Tenma Shrine

Katsuura
Kanko
Hotel

Onsen
Hospital

Sports and
Cultural
Center

Police
Station

Central
Gate

Nisshinkai
Hospital

Fire Station

Fire Station

South Gate

Nachikatsuura
Town Office

Nagisaya Hotel

Koshinoyu Hotel

Nakanoshima Hotel

Katsuura Port

Manseiro Hotel

Hachiman Shrine

Ichi no Taki Hotel

Benten Island

Ojaura

Kino
Matsushima
Pier

Katsuura
Elementary School

Katsuura
Elementary School

Manseiro Hotel

Hachiman Shrine

Ichi no Taki Hotel

Benten Island

Ojaura

Kino
Matsushima
Pier

Katsuura
Elementary School

Katsuura
Elementary School

Manseiro Hotel

Hachiman Shrine

Ichi no Taki Hotel

Benten Island

Ojaura

Kino
Matsushima
Pier

Katsuura
Elementary School

Katsuura
Elementary School

Manseiro Hotel

Hachiman Shrine

Ichi no Taki Hotel

Benten Island

Ojaura

Kino
Matsushima
Pier

Katsuura
Elementary School

Katsuura
Elementary School

Manseiro Hotel

Hachiman Shrine

Ichi no Taki Hotel

Benten Island

Ojaura

Kino
Matsushima
Pier

Katsuura
Elementary School

Katsuura
Elementary School

Manseiro Hotel

Hachiman Shrine

Ichi no Taki Hotel

Benten Island

Ojaura

Kino
Matsushima
Pier

Katsuura
Elementary School

Katsuura
Elementary School

Manseiro Hotel

Hachiman Shrine

Ichi no Taki Hotel

Benten Island

Ojaura

Kino
Matsushima
Pier

Katsuura
Elementary School

Katsuura
Elementary School

Manseiro Hotel

Hachiman Shrine

Ichi no Taki Hotel

Benten Island

Ojaura

Kino
Matsushima
Pier

Katsuura
Elementary School

Katsuura
Elementary School

Manseiro Hotel

Hachiman Shrine

Ichi no Taki Hotel

Benten Island

Ojaura

Kino
Matsushima
Pier

Katsuura
Elementary School

Katsuura
Elementary School

Manseiro Hotel

Hachiman Shrine

Ichi no Taki Hotel

Benten Island

Ojaura

Kino
Matsushima
Pier

Katsuura
Elementary School

Katsuura
Elementary School

Manseiro Hotel

Hachiman Shrine

Ichi no Taki Hotel

Benten Island

Ojaura

Kino
Matsushima
Pier

Katsuura
Elementary School

Katsuura
Elementary School

Manseiro Hotel

Hachiman Shrine

Ichi no Taki Hotel

Benten Island

Ojaura

Kino
Matsushima
Pier

Katsuura
Elementary School

Katsuura
Elementary School

Manseiro Hotel

Hachiman Shrine

Ichi no Taki Hotel

Benten Island

Ojaura

Kino
Matsushima
Pier

Katsuura
Elementary School

Katsuura
Elementary School

Manseiro Hotel

Hachiman Shrine

Ichi no Taki Hotel

Benten Island

Ojaura

Kino
Matsushima
Pier

Katsuura
Elementary School

Katsuura
Elementary School

Manseiro Hotel

Hachiman Shrine

Ichi no Taki Hotel

Benten Island

Ojaura

Kino
Matsushima
Pier

Katsuura
Elementary School

Katsuura
Elementary School

Manseiro Hotel

Hachiman Shrine

Ichi no Taki Hotel

Benten Island

Ojaura

Kino
Matsushima
Pier

Katsuura
Elementary School

Katsuura
Elementary School

Manseiro Hotel

Hachiman Shrine

Ichi no Taki Hotel

Benten Island

Ojaura

Kino
Matsushima
Pier

Katsuura
Elementary School

Katsuura
Elementary School

Manseiro Hotel

Hachiman Shrine

Ichi no Taki Hotel

Benten Island

Ojaura

Kino
Matsushima
Pier

Katsuura
Elementary School

Katsuura
Elementary School

Manseiro Hotel

Hachiman Shrine

Ichi no Taki Hotel

Benten Island

Ojaura

Kino
Matsushima
Pier

Katsuura
Elementary School

Katsuura
Elementary School

Manseiro Hotel

Hachiman Shrine

Ichi no Taki Hotel

Benten Island

Ojaura

Kino
Matsushima
Pier

Katsuura
Elementary School

Katsuura
Elementary School

Manseiro Hotel

Hachiman Shrine

Ichi no Taki Hotel

Benten Island

Ojaura

Kino
Matsushima
Pier

Katsuura
Elementary School

Katsuura
Elementary School

Manseiro Hotel

Hachiman Shrine

Ichi no Taki Hotel

Benten Island

Ojaura

Kino
Matsushima
Pier

Katsuura
Elementary School

Katsuura
Elementary School

Manseiro Hotel

Hachiman Shrine

Ichi no Taki Hotel

Benten Island

Ojaura

Kino
Matsushima
Pier

Katsuura
Elementary School

Katsuura
Elementary School

Manseiro Hotel

Hachiman Shrine

Ichi no Taki Hotel

Benten Island

Ojaura

Kino
Matsushima
Pier

Katsuura
Elementary School

Katsuura
Elementary School

Manseiro Hotel

Hachiman Shrine

Ichi no Taki Hotel

Benten Island

Ojaura

Kino
Matsushima
Pier

Katsuura
Elementary School

Katsuura
Elementary School

Manseiro Hotel

Hachiman Shrine

Ichi no Taki Hotel

Benten Island

Ojaura

Kino
Matsushima
Pier

Katsuura
Elementary School

Katsuura
Elementary School

Manseiro Hotel

Hachiman Shrine

Ichi no Taki Hotel

Benten Island

Ojaura

Kino
Matsushima
Pier

Katsuura
Elementary School

Katsuura
Elementary School

Manseiro Hotel

Hachiman Shrine

Ichi no Taki Hotel

Benten Island

Ojaura

Kino
Matsushima
Pier

Katsuura
Elementary School

Katsuura
Elementary School

Manseiro Hotel

Hachiman Shrine

Ichi no Taki Hotel

Benten Island

Ojaura

Kino
Matsushima
Pier

Katsuura
Elementary School

Katsuura
Elementary School

Manseiro Hotel

Hachiman Shrine

Ichi no Taki Hotel

Benten Island

Ojaura

Kino
Matsushima
Pier

Katsuura
Elementary School

Katsuura
Elementary School

Manseiro Hotel

Hachiman Shrine

Ichi no Taki Hotel

Benten Island

Ojaura

Kino
Matsushima
Pier

Katsuura
Elementary School

Katsuura
Elementary School

Manseiro Hotel

Hachiman Shrine

Ichi no Taki Hotel

Benten Island

Ojaura

Kino
Matsushima
Pier

Katsuura
Elementary School

Katsuura
Elementary School

Manseiro Hotel

Hachiman Shrine

Ichi no Taki Hotel

Benten Island

Ojaura

Kino
Matsushima
Pier

Katsuura
Elementary School

Katsuura
Elementary School

Manseiro Hotel

Hachiman Shrine

Ichi no Taki Hotel

Benten Island

Ojaura

Katsuura Map(Around Station) Maguro Dining Map

B1 ① KAIHAMI Nachi-San712 ☎0735-55-0313



Recommended
Kumano Soba Noodles & Mehari Sushi Set ¥1,200
Kamo Nanban (Soba noodles with duck dish) ¥1,100

☎ 9:00-17:00 (No regular holiday)
🅑 13 parking spaces

Maguro-Don Teishoku ¥1,500
(bowl of rice topped with sliced raw tuna)

We make delicious tuna rice bowl with delicious fresh ingredients. Enjoy the opportunity to taste fresh tuna where the Nachi fall is located.



B1 ② CAFÉ CODOU Ichinono 3009-5 ☎080-1411-3583



Recommended
Lunch Menu
Hot Sandwich with Drink ¥850
Chicken Katsu Nanban (Chicken cutlet dipped in sweet vinegar with tartar sauce) with Drink ¥850

☎ 11:30-17:00 (closed Monday and Tuesday)
🅑 10 parking spaces

Maguro Poke-Don ¥850
(Rice Bowl of Tuna marinated in Soy Sauce and Vinegar) With Drink (Lunch only)
Offering Lunch Menu and Handmade Cake with reasonable price



B1 ③ NACHI NEBOKEDOU Ichinono3434-1 ☎0735-55-0031



Recommended
Ganso Kuroame Soft ¥350

☎ 8:15-17:00 (No regular holiday)
🅑 50 parking spaces
🅑 15 parking spaces for bus

Nama Maguro Don ¥1,200
(bowl of rice topped with fresh tuna)

We only use fresh tuna that landed in Katsuura port. Please enjoy chewy texture of tuna.



B1 ④ KAMASEN Ichinono3917 ☎0735-55-0088



Recommended
Nama Maguro-Don (bowl of rice topped with raw tuna) ¥800

☎ 11:00-20:00 (Tuesday 12:00~) (open year round)
🅑 25 parking spaces

Maguro Kun (Fried tuna) ¥300

We make tuna tempura using local fresh tuna product.

B2 ⑤ GOSAKU Tenma697-1 ☎0735-52-3878



Recommended
Maguro yukke (tuna tatare) ¥600

☎ 17:00-23:00 (closed on Sunday)
🅑 10 parking spaces

Otsukuri moriawase ¥1,800
(sashimi set)

Although we are far away from the center of the town, we try to give our best.



A3 ⑥ YUYA Asahi 2-248 ☎0735-52-5577



Recommended
Lunch: Yuya set menu
Dinner: Whale sashimi

☎ 11:30-14:00 & 17:00-22:00 (closed on Monday)
🅑 8 parking spaces

Maguro (tuna) Carpaccio

Visited by many local customers. We offer reasonable price. You can also enjoy assorted sashimi with 6 to 7 types.



B3 ⑦ HANANO Tenma844-3 ☎0735-52-0507



Recommended
Jumbo Ebi Tendon ¥1,100
Ise Ebi Tendon ¥1,800
Omakase set menu ¥1,300

☎ 11:00-14:00 & 17:00-22:00 (closed on Tuesday)
🅑 8 parking spaces

Maguro-Don ¥1,100~
(bowl of rice topped with sliced raw tuna)

Using delicious fresh tuna. Delicious authentic taste cuisines with reasonable price.



B3 ⑧ TAIRYOU Kitahama3-56 ☎0735-52-2388



Recommended
Yaki soumen (Fried soumen noodle) ¥800
Croquette bento ¥500~

☎ 11:30-14:00 17:00-21:00 (closed on Sunday)
🅑 2 parking spaces

Maguro-Don Teishoku ¥1,000
(bowl of rice topped with tuna & natto)

We make variety of random dishes by order. Local information sources to local people gather.



A3 ⑨ HAGEYAMA Asahi3-79-3 ☎0735-52-4828



Recommended
Grilled Tuna cheek meat with butter ¥800
Whale sashimi ¥1,000
Kumano beef tatakai ¥1,000
We provide rooms to stay ¥3,000~

☎ 11:00~ 17:00~ (closed on Sunday)
🅑 available parking spaces

Maguro no Yukke-Don ¥800

We use fresh tuna landed in Katsuura Port Please taste the freshness of the whale and beef meat.



A3 ⑩ EN Asahi2-82-1 ☎0735-52-5211



Recommended
Maguro Teishoku
Koazi Sushi ¥350

☎ 11:30-13:30 & 16:30-21:30 (closed on Thursday)
🅑 Parking available

En Teishoku ¥1,800
(set menu)

Using fresh local product fish (grilled or boiled), we offer fresh tuna sashimi set menu in large portion.



B3 ⑪ MATENROW CHINESE FOOD Kitahama 1-16 ☎0735-52-0099



Recommended
Shiba Ebi with chili sauce ¥1,250
Maguro no karaage with ponzu sauce ¥890
Kani Hairi Retasu Chahan ¥890

☎ 11:30-14:00 & 17:00-22:00 (closed on Tuesday)
🅑 10 parking spaces

Maguro ramen ¥880
(tuna ramen)

We make authentic Chinese cuisine from tuna which is very delicious.






Inside this facility you can watch Tuna Filleting Show and buy fresh tuna caught from nearby sea. From open-air lounge you can enjoy your food while gazing at Katsuura Fish Port.



Katsuura Fish Market - Nigiwai Ichiba Market

Regular holiday closed on Tuesday
Opening hours 8:00~16:00
Saturday 8:00~20:00

Access 5 Minute walk from Kii-Katsuura Station
5 Minute walk from Katsuura Onsen Bus Terminal

Capacity 80 person
Parking Space Free parking lot available
Tel 0735-29-3500



After eating a delicious tuna, relieve your tired feet at footbath.



UMINO-YU

You can enjoy the view of Katsura Bay next to Katsura fishing port



TAKINO-YU

Next to JR Kii-Katsura station



MAGURONO-YU

Katsura fishing port front

Opening time 6:00~22:00

お店紹介記事の見方

1 → **G3 28 HINOKI STEAK HOUSE** Tsukiji 1-1-13 ☎0735-52-5550

Recommended
Special lunch menu:
Hamburger steak
"Half & half"
Marlin tuna steak
☑ 11:30-14:00 & 17:00-21:00 (closed on Monday)
🅐 4 parking spaces

Special lunch menu: "Half & half" hamburger steak ¥1,500 (minced tuna & Kumano beef)
Hamburger steak ... using 100% of Kumano beef. Please enjoy this rare menu.

2 →

1 Vertical line (A-), the horizontal line (1-) and the number written in the map is pointing the shop location
Title coloring
■ Tuna Wholesale Store (outside page)
■ Tuna Restaurant (inside page)

2 ☑ ...Business Hour, Regular Holiday
🅐 ...Parking Space

3 C ...Accept Payment by card
There's a difference between card that accepted in store, please ask the store beforehand
E ...English menu available
♿ ...Wheelchair accessible

G3 32 OGAWA Tsukiji 2-4-3 ☎0735-52-5602

Recommended
Maguro tatsuta age ¥1,100
Lunch time service with:
Fresh tuna sashimi set ¥1,080
Maguro-don ¥860
☑ 11:00-14:00 & 16:00-22:00 (closed on Thursday)
🅐 1 parking spaces

Maguro (tuna) steak ¥1,650

We use fresh coastal tuna. It has crispy texture outside and moisture inside. A roiling pot of whale meat, deep fried tuna, and whale sashimi are also popular.

D2 12 EDOYASU Tsukiji 7-2-2 ☎0735-52-1280

Recommended
Nama Maguro-Don ¥1,260
Maguro Steak-Don ¥1,400
* The price does not include consumption tax.
☑ 11:00-14:00 & 17:00-21:00 (closed on Wednesday)
🅐 3 parking spaces

Maguro Teishoku ¥2,100 (Tuna set)
A 50 year old store since its first operation. We use fresh tuna taken off Katsura.



G1 16 NIDAIME (MEHARI SUSHI) Tsukiji 2-2-6 ☎0735-52-1670

Recommended
Maguro teishoku ¥1,100
Mehari-zushi teishoku ¥1,100
☑ 11:00-21:00 (No regular holiday)
🅐 3 parking spaces

Nidaime teishoku ¥1,400 (set menu)
Recommended for those who want to eat Mehari-zushi and Maguro-Don. Many kinds of skewers (tuna, pork, fried onion, etc) are also available.



F2 20 CAFÉ AMAAI Tsukiji 5-2-10 ☎0735-52-0181

Recommended
Chicken Curry ¥900
Cake Set From ¥800
Caffe Latte ¥500
Chai Tea ¥600
☑ 11:30-00:00 (last order 23:00) (closed at Wednesday and First Thursday)
🅐 2 parking spaces

Tuna Menchi Katsu (Deep fried minced tuna) ¥800 and Tomato Tartar Sauce (Lunch Only)

A café where you can enjoy both meal and tea. We have an original tuna cuisine, cakes and cafe latte.



G3 24 ITO KAMABOKO Tsukiji 3-3-14 ☎0735-52-0413

Recommended
Maguro dango (tuna meatballs) ¥350
Tempura ¥90-
☑ 8:00~16:00 (closed on Sunday)
🅐 1 parking spaces

Maguro dango ¥350 (tuna meatballs)
We serve our menu with fresh tuna that landed at Katsura Port. Tempura is popular too.



G3 28 HINOKI STEAK HOUSE Tsukiji 1-1-13 ☎0735-52-5550

Recommended
Special lunch menu:
Hamburger steak
"Half & half"
Marlin tuna steak
☑ 11:30-14:00 & 17:00-21:00 (closed on Monday)
🅐 4 parking spaces

Special lunch menu: "Half & half" hamburger steak ¥1,500 (minced tuna & Kumano beef)
Hamburger steak ... using 100% of Kumano beef. Please enjoy this rare menu.



F4 33 IROHA SUSHI Tsukiji 4-3-1 ☎0735-52-0760


Recommended
Maguro no i bata itane ¥500
Iruka (dolphin) sashimi ¥1,000
Sushi ¥1,500
☑ 11:00-13:30 & 16:30-23:00 (closed on Wednesday)
🅐 No parking spaces

Kaisen-don ¥1,000 (a bowl of rice topped with sashimi)
We use nearby sea tuna. We also make dishes from whale meat and tuna stomach. Reliable with charge clarification.



Katsura Map(Around Station) Maguro Dining Map

F1 13 BODAI Tsukiji5-1-3
☎0735-52-0039



Recommended
Raw tuna sashimi
Tuna and Avocado
Miso soup with vinegar
Tuna and Kiyomizuna
Dashu Chopze
Tuna Yukke

☎11:00-14:00 &
17:00-23:00
(closed on Tuesday)

Maguro chūtoro katsu Teishoku ¥1,500
(fried tuna set) * Maguro chūtoro katsu ¥1,400

Using Katsura's tuna product. Melt texture. The gleefully lifted breaded fried menus are so juicy and only can be enjoyed at our shop.

☎3 parking spaces

☎☎☎



F1 14 YAMATO Tsukiji 4-2-1
☎0735-52-5738



Recommended
Yamato tsukuri teishoku
¥1,700
Maguro yukke-Don ¥1,100
Sanma Sushi ¥600

☎10:00-17:00
(closed on Thursday)

Yamato-Don ¥1,600
(a bowl of rice topped with special fresh tuna)

Tuna rice bowl is the most popular menu. Yukken-don is also recommended. Take-away menus are available. All seats are non-smoking.

☎☎



F1 15 YAMAGA Tsukiji4-2-1
☎0735-52-3117



Recommended
Honnamon Maguro-Don
¥980
Yamakake-Don ¥1,200
Kujira (whale) sashimi
¥1,700

☎10:00-18:00
(No regular holiday)

Mix-Don ¥1,500
(a bowl of rice topped with variety of raw fish)

It is a luxurious rice bowl with tuna fillet, fatty tuna, minced tuna with onion leaves, squid etc.

☎☎



H2 17 HIROKICHI Katsura89-13
☎0735-52-6196



Recommended
Japanese taste of grilled beef fillet, seasonally fish sashimi, boiled fish, and various of whale sashimi

☎17:00-22:00
(closed on Tuesday)

Assorted fresh tuna sashimi (5 kinds) ¥2,000


Please enjoy the delicious local seafood.

☎5 parking spaces

☎☎



F2 18 SENRYUU Tsukiji 4-3-27
☎0735-52-0860




Recommended
Tsukuri teishoku
¥1,400~
Sanma (saury) sushi
¥700~

☎8:00-16:00
(No regular holiday)

Tekkadonburi ¥1,050
(vinegared rice topped with tuna)

A delicious rice bowl with fresh tuna that landed at Katsura Port.

☎☎



H2 19 YAGUMO SUSHI KATSUURA TEN Katsura371-21
☎0735-52-3101



Recommended
Jönigiri ¥2,200
Naminigiri ¥1,100
Also available:
Whale sashimi & sushi

☎12:00-13:30 &
17:30-20:30
(closed on Thursday)

Tokujou nigiri ¥3,200
(extra-special sushi)

We use good quality of raw tuna.

☎3 parking spaces

☎☎



F3 21 KITCHEN NICORI Tsukiji 5-2-33
☎0735-30-4435



Recommended
Marinara ¥980
Quattro Formaggio
¥1,180

☎11:30-14:00
(last order)
18:00-21:30
(last order)
(closed on Sunday and
Third Monday)

Nachi Katsu Pizza ¥1,080
(Pizza with Boiled Tuna Flake topping)

Please feel the restaurant atmosphere while enjoy our popular pizza that baked in a classical stove.

☎2 parking spaces

☎☎

F3 22 MASUDAYA Tsukiji 5-2-14
☎0735-52-7466



Recommended
Maguro Haru-maki
¥1,080
Maguro Shumai ¥670
Maguro Steak

☎11:00-14:00 &
16:00-21:00
(closed on Tuesday)

Yokubari Teishoku ¥1,620

Our recommended set meal of sashimi, steamed meat dumpling, one bites cutlet with salt sauce. Also including small bowl of daily special.

☎3 parking spaces



F3 23 TAKEHARA Tsukiji 4-3-23
☎0735-52-1134



Recommended
Maguro no naizo ryori ¥630
Medama Nitsuke ¥840
Tail & fin ¥630

☎11:00-14:00 &
17:00-21:00
(No regular holiday)

Maguro(tuna)sashimi set ¥1,575

Once tried our sashimi, you will not be able to forget its taste. Tuna's internal organ menus are also recommended. All seats are counter seat type and non-smoking.

☎4 parking spaces



F3 25 MAGURO SUSHI MASA Tsukiji 4-4-10
☎0735-52-1870



Recommended
Special nigiri sushi set
¥1,300
Katsura nigiri sushi set
¥1,000
Aji kurabe set ¥1,000
Maguro-don set ¥1,000

☎10:00-15:00
(closed on Tuesday)

Special nigiri sushi set ¥1,300
(bowl of rice topped with sliced raw tuna)

Local production for local consumption! We use fresh tuna that landed at Katsura Port. We offer reasonable price.

☎Parking available

G3 26 NACHI Tsukiji2-3-10
☎0735-52-1046



Recommended
Nama maguro-don
¥980
Double maguro-don
¥980

☎11:30-21:00
(No regular holiday)

Maguro dukushi teishoku ¥1,780
(tuna variety platter)

We offer many kinds of menu such as sashimi, fresh tuna rice bowl, and another creative menu using Kumano beef and whale's meat.

☎6 parking spaces



G3 27 TATSUMIYA KATSUURA Tsukiji 1-1-14
☎0735-52-6620



Recommended
Maguro hamburger ¥500
Maguro kabutoyaki ¥3,000
Maguro-Don ¥950

☎11:00-14:00 &
17:00-23:00
(open year round)

Maguro hara-mi shioyaki ¥500~
(tuna belly meat grilled) (more than ¥5000 purchase)

We have a varied menu such as Maguro-don, Maguro Kabutoyaki, Tuna's burger, menus made of whale meat, grilled beef hormone, yakiniku set, etc.

☎2 parking spaces



H3 29 TAISHOKAKU CHINESE FOOD Katsura398-1
☎0735-52-0310



Recommended
Tuna croquette
¥250
Tuna's spring roll
¥500

☎11:00-14:00 &
17:00~
(No regular holiday)

Ishiyaki maguro bibimbab ¥1,300
(a bowl of rice topped with grilled tuna)

We make many creative Chinese style menus using local production of fresh tuna.

☎6 parking spaces



H3 30 KATSURAGI 勝浦 398-11
☎0735-52-1845



Recommended
Maguro kama shioyaki
¥800~
Nachikatsudon ¥1,050

☎11:30-14:00 &
17:00-22:00
(closed on Monday &
the fourth Sunday of month)

Maguro teishoku ¥1,600
(tuna set meal (grilled tuna is made by order))

We offer variety of menus such as sashimi, teppanyaki, deep-fried meats, maguro-jiru, etc.

☎4 parking spaces



D4 31 AJIRO Tsukiji 7-6-16 Empire Building Ground Floor
☎0735-29-7447



Recommended
Tori Ami Yaki (Grilled Chicken)
From ¥450
Raw Tuna Sashimi
From ¥800

☎17:00-22:00
11:00-14:00
and 17:00-22:00
in Saturday and Sunday
(Closed at Wednesday)

Maguro-Don ¥1000
(Tuna Rice Bowl)
(Limited at Saturday and Sunday Lunch)

Our Restaurant have the best fresh tuna!!

☎2 parking spaces

F4 34 KINOSHITA SENGYO-TEN Tsukiji 2-4-10
☎0735-52-0573



Recommended
Maguro teishoku
¥1,500
Sazae tsuboyaki
¥1,000/3 pcs

☎08:00-17:00
(Sales 6:00~18:00)
(open year round)

Kinkai nama maguro no osashimi ¥1,000
(raw tuna sashimi)

You can enjoy ise-ebi lobster and various menu of fresh fish caught from the nearby waters, sea urchin bowl and tuna bowl are also available.

☎10 parking spaces

☎☎

H5 35 MORIMOTO-YA Katsura451
☎0735-52-4578



Recommended
Juwari Soba ¥700
Mini maguro-don &
zarusoba ¥1,300

☎11:00-14:00 &
17:00-20:00
(closed on 2nd &
4th Tuesday)

Maguro-don ¥900
(bowl of rice with tuna topping)

We use delicious fresh and soft raw tuna. Typical building of the town.

☎5 parking spaces



F1 36 MATSUDAYA Tsukiji 4-1-1
☎0735-52-2244



Recommended
Tsukenamamaguro-don &
udon set
¥1,000
Tsukenamamaguro-don
¥700

There are take-away menus
☎10:00-17:00
(closed on Monday)

Tsukenamamaguro Kaki no Ha Zushi ¥150
(pickled raw tuna sushi in persimmon leaf)

Fresh tuna wrapped in persimmon fruit leaves that have a very distinctive aroma served with sticky sauce. Single menus are also available (mackerel/salmon/cucumber pickled raw tuna)

☎☎



Please look at the front page for Tuna wholesale store.

MAGURO DINING

Kishuu Katsuura Tuna Whole Salers MAP



Q What is the difference within fresh tuna and refrigerated tuna?

A In frozen tuna, cells will be destroyed by freezing, while flavor and nutrients will flow out as drip during the liquefaction process. In raw tuna there is no drip, so you can taste the original flavor of tuna.

Q Why is tuna taken from Katsuura water so delicious?

A Because of Longline fishing method and the fishing port with fish boats that keep fish fresh in the fish holder cooled to $-0.4 \sim 0.1 \text{ }^{\circ}\text{C}$. Katsuura fishing port is a leading port in "longline fishing method".



Q Is there any differences in the delicate periods based on the type of tuna?

A There are many types of fish caught throughout the year, but the most delicious period is caught during winter.

Kinds of tuna	Fishing period	Delicious period
Hon Maguro (Pacific Bluefin Tuna)	March-June	April, May
Mebachi Maguro (Big-eye Tuna)	All time	January-March
Kihada Maguro (Yellowfin Tuna)	All time	February-April
Binchou Maguro (Albacore Tuna)	All time	January-March

Q What is the best way to identify delicious tuna?

A The way to recognize when it is sold in the plate is those with parallel eyes and then diagonally entered are the best. Those that do not have drip (water on the plate). Textured clear like a jelly.

List of Tuna Wholesalers

C1 1 SHIMA SUI SAN Tenma 30
☎0735-52-1762

Recommended
Website
<http://maguro1.com/>
reference

🕒 10:00-16:00
(closed on Saturday)

🚗 2 parking spaces

We sell fresh tuna. We will deliver your order to the whole area of Japan.

C1 2 KITAGOORI SHOUTEN Tenma 133-1
☎0735-52-0826

Recommended
Natural raw tuna
Various fresh sashimi variety
Tuna dryness of tuna
Tuna's stomach
Tataki of tuna - bonito
Sanma Maru dried (limited time only)

🕒 09:00-18:00
(closed on Sunday)

🚗 Parking available

We are recognized as "Maguro-Ya" tuna shop by local people. Even the price is affordable. If you go down the bypass road we are on the left side. Regional shipping & cash on delivery shipping are provided.



A3 3 MUJIN HANBAI NAKAHIDE Asahi 1-173-3
☎0735-52-3777

Recommended
Nakauchi, Harabo
Sashimi, kakuni
Namabushi
All ¥ 200

🕒 09:00-17:00
(No regular holiday)

🚗 2 parking spaces

We sell fresh tuna with our motto "Low Price, Fresh, and Convenience". The pioneer of tuna unattended sale.

C4 4 KANEYOSHI SUISAN Kitahama3-105-4
☎0735-52-2260

Recommended
White Tuna
Big Eye Tuna
and so on

🕒 08:30-15:00
(closed on the day before public holiday, Saturday, Sunday, the 2nd & 4th Tuesday)

🚗 Parking available

Cheap price can be offered because we are broker. We also sell our product at Sunday Market. Delivery service to all Japan area is possible.

B4 5 KATSUURA KAISANBUTSU CENTRE Tsukiji 5-1-1
☎0735-52-4545

Recommended
Boiled tuna square ¥ 972
Maguro mirin dried ¥ 1,080
Tuna's eyeball ¥ 756
tuna guts pickled in salt ¥ 810
Tuna sprinkling ¥ 540

🕒 08:00-17:00
(No regular holiday)

🚗 20 parking spaces

We provide all products that are made from tuna that landed at Katsuura Port. We also sell fresh tuna used for sashimi with market price.

B4 6 MINAMI NO UMI NO KUJIRAYASAN Tsukiji 2-3-1
☎090-3265-7560

Recommended
Dried Tuna ¥ 600
Tuna ¥ 500
Whale meat

🕒 09:00-17:00
(No regular holiday)

🚗 2 parking spaces

Dried tuna is a typical souvenir of tuna town. The whale products are special items. You can taste the dried fish and whale meat.

B4 7 HORICHUUSHOUTEN Tsukiji 3-3-6
☎0735-52-0223

Recommended
Sea ham 50 g ¥ 650
Wakayama Jabara plum wine 720 ml ¥ 2,300

🕒 08:00-20:00
(closed on Sunday)

🚗 No parking spaces

You can taste local sake, plum sake, and Wakayama's fruit sake. We also sell our product at Sunday Market. Local shipment is possible.

A4 8 NAMA MAGURO SELF HANBAISHO Tsukiji 8-6-5
☎0735-52-0071

Recommended
Sales of raw tuna sashimi, Nakauchi, Seared Tuna etc at ¥ 200 pack
Raw tuna block from ¥ 380 / g

🕒 07:00-
(closed on Saturday)

🚗 5 parking spaces

We sell best selected raw tuna which has chewy texture. Enjoy the original taste of tuna. Delivery service is available in regional area.

B4 9 KAJIYASU Tsukiji 4-4-8
☎0735-52-0274

Recommended
White Tuna Sukimi (Tuna Ribs meat)
Frozen tuna (bluefin tuna) and so on

🕒 07:00-17:00
(closed on 2nd & 4th Tuesday, Saturday)

🚗 3 parking spaces

After the auction, fish cutting done at the factory. You can see the fish cutting process.

B4 10 NAKATORA SHOUTEN Katsuura417
☎0735-52-0252

Recommended
Boiled tuna square ¥ 972
Maguro mirin dried ¥ 1,080

Sashimi raw tuna market price
Abalone, turban shell,
Japanese spiny lobster

🕒 07:00-17:30
(closed on January 1st)

🚗 10 parking spaces

Fresh delicious tuna for sashimi. Sometimes, you can also see tuna cutting activity in front of the shop. We also provide delivery service.

B4 11 MAGURO OOI Katsuura485
☎0735-52-2780

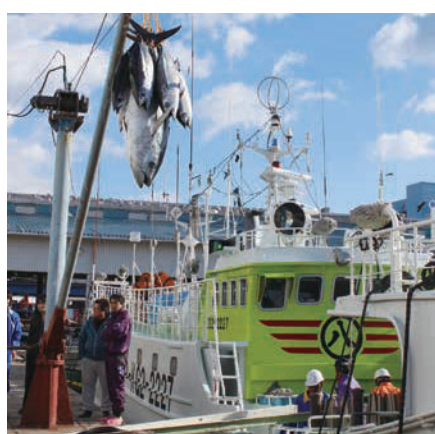
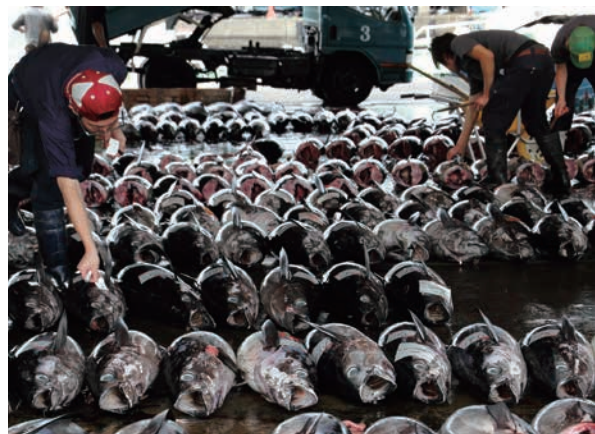
Recommended
Tuna produced in Katsuura
Big Eye Tuna
Yellowfin Tuna
White Tuna

🕒 07:00-17:00
(No regular holiday)

🚗 2 parking spaces

We are very concerned with fresh tuna produced in Katsuura. We provide delivery service to whole area in Japan.

Watching Tuna Auction Process at Katsuura Fish Market



Katsuura fishing boasts Japan's largest tuna catches. Rows of freshly caught tuna openly displayed on the auction floor in early morning. You can see the tuna auction process for free from 7 to 8 a.m.

Place: Observation area (2nd floor of Katsuura Port Building)

TYPES OF MAGURO (TUNA)



**Kuro Maguro / Hon Maguro
(Pacific Bluefin Tuna)**



Mebachi Maguro (Big Eye Tuna)



**Kihada Maguro
(Yellowfin Tuna)**



**Binchou Maguro
(albacore tuna)**



Kuro Maguro / Hon Maguro (Pacific Bluefin Tuna)
In 2018.3.12 450kg of Tuna was caught in Katsuura Fish Port

Kuro maguro is a highly commercial and valuable species with a few number of caught. It is also known as "Black Diamond". This species of tuna could be found in the Japan's ocean, the Atlantic Ocean, and Mediterranean. It may reach as much as 3 m in length and 500 kg in weight.

Mebachi Maguro (Big Eye Tuna)

The big eye of this tuna is where the name of Mebachi comes from. This kind of tuna are found in the open waters of tropical and temperate oceans and often used for sushi and sashimi. It has special taste. A big mebachi maguro can grow up to 2 m in length and 200 kg in weight.

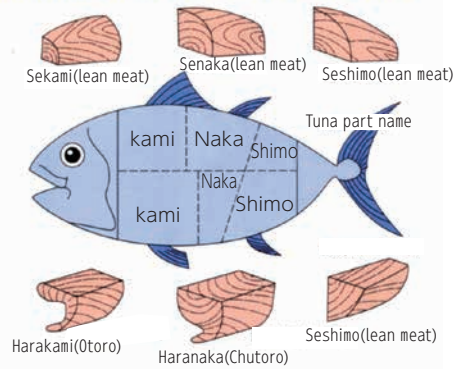
Kihada Maguro (Yellowfin Tuna)

This maguro has a yellow skin and pink, lean meat. Besides sashimi, it is also processed into canned fish and fish sausage. A big Kihada Maguro may reach as much as 1.8 m in length and 100 kg in weight.

Binchou Maguro (albacore tuna)

It is a small size of tuna and it has long pectoral fin. The sticky texture of Binchou Sashimi is very popular among in local menu. This maguro is often used for cheap sushi. Also known as "binchou" or "tombo" (dragonfly). The average size of this tuna is 1.4 m in length and 40 kg in weight.

KATSUURA KISHUU NAMA MAGURO(Tuna) PART



The fatty portion is classified into "Otoro" and "Chutoro" in accordance with a degree of fat. In particular, the part that contains higher fat is called "Otoro" while the part with slightly less fat is called "Chutoro."

Published on October 2018

Please note that the information on publications may be subject to change regarding the menu and prices stated in the contents as of the issue date.

Also, due to purchase of the day, it may differ from the picture.



You can download PDF Version of Tuna Dining Map from the following QR Code

ACCESS TO NACHIKATSUURA

By JR

- Kyoto — Shin-Osaka — Tennoji — **Kii-Katsuura** (Tokyo train: 4 hours from Kyoto and 3 h 50 min from Shin-Osaka)
- Nagoya — **Kii-Katsuura** (3 h 30 min by Tokyo (Wide View Nanki Train))

By Bus

- Tokyo (Ikebukuro Higashi-guchi) — **Katsuura Onsen** (10 h)

Mie Koutsu Bus (Shingu office) : Tel 0735-22-5268



CONTACT NUMBER

Taxi

- Crystal Taxi (Katsuura office) TEL 0735-52-0444
- Kumano Koutsuu (Katsuura office) TEL 0735-52-2358

Bus

- Kumano Koutsuu (Katsuura office) TEL 0735-52-2358

Tourist information center

- Nachi Katsuura Town Tourism Association
TEL 0735-52-5311

Accommodation information center

- Nanki Katsuura Onsen Union TEL 0735-52-0048

Nachikatsuura Town Office, Tourism Division

7-1-1 Tsukiji, Nachi-Katsuura Higashimuro,
 Wakayama 649-5335 JAPAN
 TEL 0735-52-0555